

Sunday, October 23, 2005

Doors open at 1:30 PM
Program begins at 2:30 PM

The Erie Canal

Fran Reidelberger



We invite you to travel the canal system from Albany to Buffalo, sailing in the wake of history, enjoying the tranquil beauty, attending the festivals, visiting the old canal towns, and wondering what our country would be like if the canal had never been built. **“It”** is the Erie Canal in New York State: An engineering marvel in 1825, an economic juggernaut throughout the 19th Century, an increasingly popular recreational delight today.

Sunday, November 20, 2005

Doors open at 1:30 PM
Program begins at 2:30 PM

Irish Stories and Glories

Sandy Mortimer

The richness of Ireland lies not only in the beauty of the land but in the stories of its people. To truly appreciate this Island we'll “meet” some of those who have lived here all through the millennium. Throughout this Country, from north to south the little-known and seldom-seen sites, create their own special bit of magic. Those discoveries, and so much more, are what is waiting for us in **–Irish Stories and Glories.**



Sunday, March 5, 2006

Doors open at 1:30 PM
Program begins at 2:30 PM

The Pony Express

Hal McClure



Ride along with Hal McClure as he follows the old Pony trail through Kansas, Nebraska, Wyoming, Utah, Nevada and California. You'll encounter such historical figures as Buffalo Bill and Wild Bill Hickock who began their frontier careers in the Express traveling nearly 2,000 miles in only 10 days. You'll also camp out with modern Pony Express riders members of the National Pony Express Association, who annually gallop the same difficult trail.

WE HOPE YOU CAN JOIN US

We plan for another exciting year of travel plus adventure. The travelogue series has been a long-standing tradition at Wagnalls.

We appreciate the support provided that is making it possible to provide the travelogue series this year. The cost of each program is approximately \$1,000. The support provided includes the various donations given last year at each of our programs. This also includes the support of the Boving Family Fund.

It is good to work together so we might provide a variety of program options to our community. Our purpose is to enrich community life by maintaining a vital cultural center where resources, learning and talents are shared

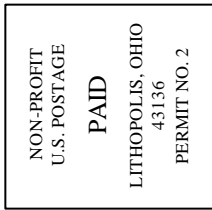
The ADMISSION CHARGE will be \$5.00 each for general admission with nursing home groups and children/students \$3.00 each.



The Wagnalls Memorial Foundation
150 East Columbus Street, P.O. Box 217
Lithopolis, OH 43136

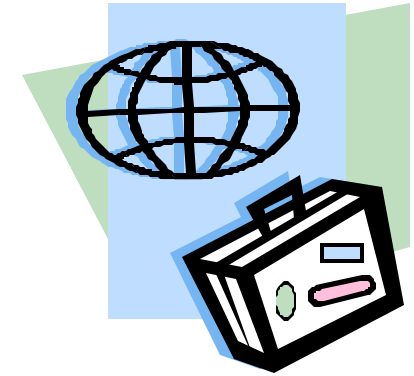
Terri Sheehan, Travelogue Coordinator
Email - tsheehan@wagnalls.org
Fax - 614.833.4767
Phone - 614.837.4765 - Extension 106

The Wagnalls Memorial Foundation
150 East Columbus Street, P.O. Box 217
Lithopolis, OH 43136



COME TRAVEL THE WORLD WITH US

TRAVEL AND ADVENTURE
SERIES FOR
2005-2006



Presented by

**The Wagnalls
Memorial Foundation
150 East Columbus Street
Lithopolis, OH 43136**

With support from the
Boving Family Fund